

26410 127 Ave Maple Ridge

Main Floor: 1,968 sq.ft.
 Upper Floor: 920 sq.ft.
 Finished Basement: 1,297 sq.ft.
 Unfinished Basement: 666 sq.ft.
Total Livable: 4,851 sq.ft.

Garage: 736 sq.ft.

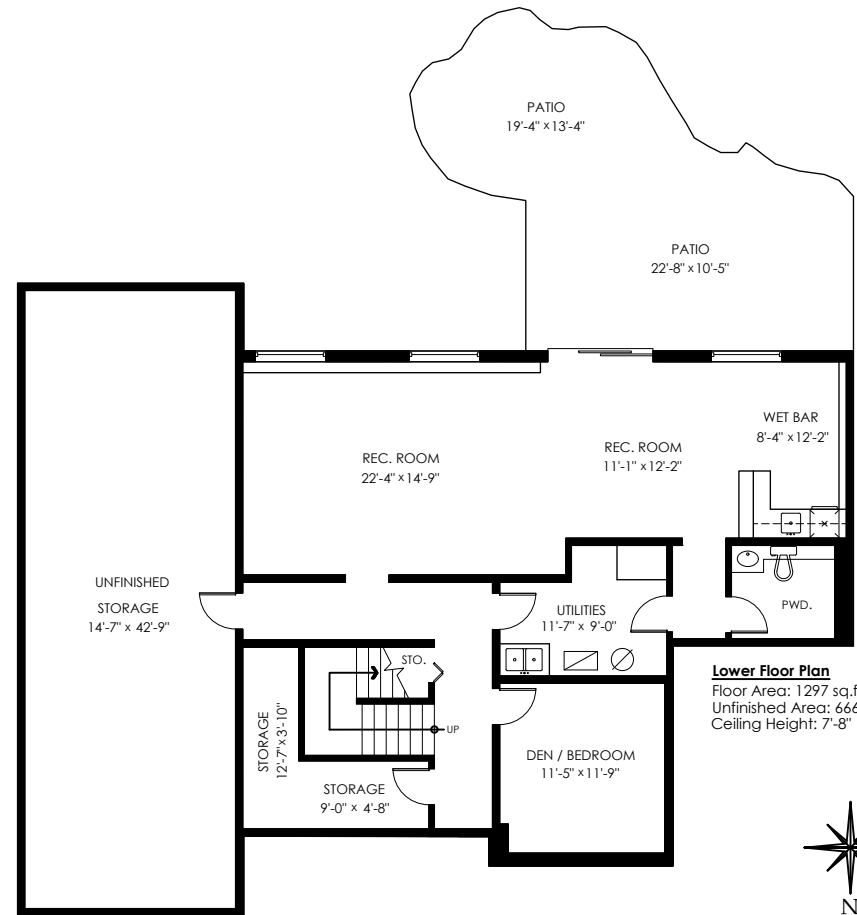
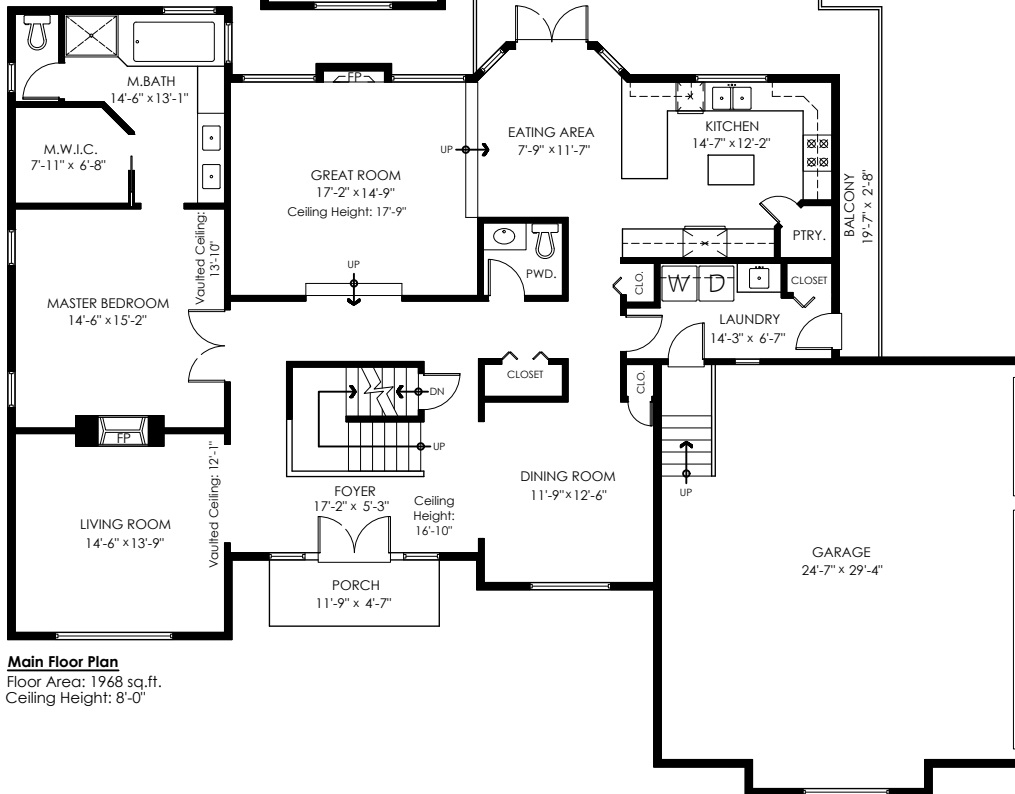
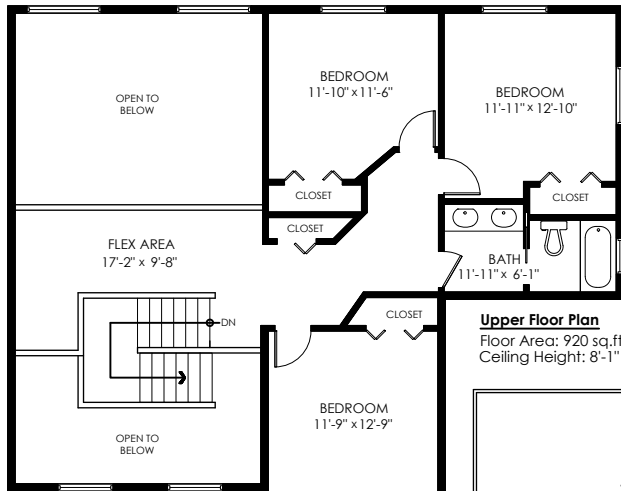
Patio: 465 sq.ft.
 Balcony: 372 sq.ft.
 Porch: 54 sq.ft.
Total Extras: 891 sq.ft.

Open To Below: 374 sq.ft.

JUSTIN HENNESSEY

604.805.4669

justinhennessey.com



E&O Insured. Total square foot calculated to gross unit area. SQFT based on interior measurements to exterior walls, not taken from original blueprints, may include unfinished area. This is for marketing purposes only and is not intended for architectural/construction use. All details, sizes & placements should be considered approximate within +/- 2% tolerance.

info@pixlworks.com www.pixlworks.com 604.329.5788



MEASURED ON: (2022-10-26)